

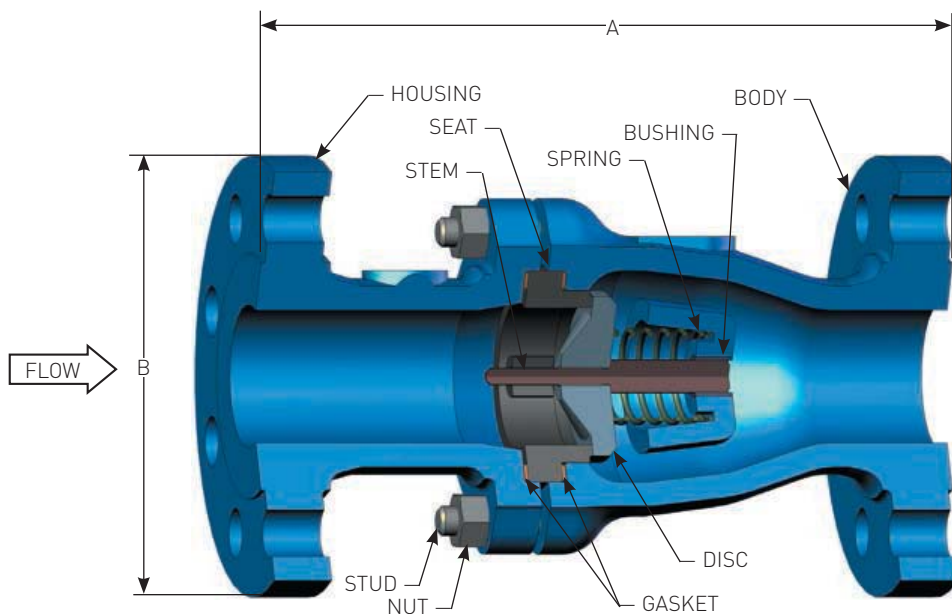
# Excalibur®

The **DFT® Excalibur Silent Check Valve** is a spring-assisted, center guided, non-slam check valve that provides reliable, low-maintenance service for a wide range of fluids and pressure/temperature combinations. The valve consists of a body, gasket, seat, spring, disc with stem and guide bushing. Excalibur check valves are available in a wide range of sizes and pressure ratings and in a variety of metals to meet most check valve requirements.



## FEATURES:

- ASME B16.10 Face-to-Face dimensions
- Spring-assisted silent closing, non-slam
- 2" to 24" Line size
- ASME 150 to 1500 (See chart)
- Standard body materials:
  - A216 Grade WCB carbon steel
  - A351 CF8M stainless steel
- Optional body materials:
  - Alloy 20
  - Duplex SS
  - Hastelloy®
  - Inconel® 600
  - Monel
- Standard ends:
  - RF Flanged
- Optional ends (4):
  - Butt weld
  - Flanged x Butt weld
  - RTJ
  - Victaulic®
- Stainless steel trim
- Center-guided
- Dual-guided stem
- Horizontal or vertical installation
- Tight shutoff
- Two-piece body
- Protected spring
- Easy maintenance
- Versatile
- Options:
  - Soft seat
  - Inconel® X-750 Spring
  - Custom sizing low flow
  - Severe service trim
  - Stellite trim (600°F+)
  - NACE (See page 39)



Consult pages 40 and 41 for Pressure/Temperature ratings and soft seat materials.

# Excalibur®

## MATERIALS OF CONSTRUCTION

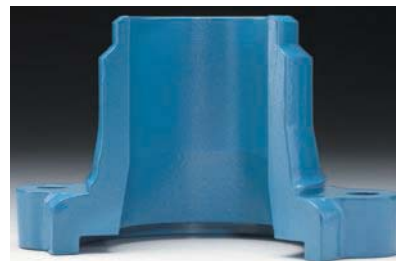
COMPONENT	CARBON STEEL BODY	STAINLESS STEEL BODY
Body	A216 Grade WCB	A351 CF8M
Disc/Stem Assembly	A351 CF8M/A479 316	A351 CF8M/A479 316
Seat (4)	A351 CF8M	A351 CF8M
Spring (1)	A313 316	A313 316
Bushing	A479 316	A479 316
Bolting (2)	A193-B7 (Stud) & A194-2h (Nut)	
Gasketing (3)	Cl. 150 & 300	CFG
	Cl. 600+	316 Spiral wound with Flexible Graphite Filler

Class	150 RF	300 RF	600 RF	900 RF	1500 RF	
2"	A	8	10.50	11.50	14.50	14.50
	B	6	6.50	6.50	8.50	8.50
	Weight	22	29	35	81	81
	Cv	65	65	65	51	51
	CP	0.64	0.64	0.64	0.85	0.85
2 1/2"	A	8.50	11.50			
	B	7.00	7.50			
	Weight	30	42			
	Cv	105	105			
	CP	0.44	0.37			
3"	A	9.50	12.50	14	15	18.50
	B	7.50	8.25	8.25	9.50	10.50
	Weight	37	52	69	155	158
	Cv	155	155	155	138	109
	CP	0.26	0.26	0.26	0.22	0.28
4"	A	11.50	14	17	18	21.50
	B	9	10	10.75	11.50	12.25
	Weight	64	92	138	176	267
	Cv	265	265	265	242	187
	CP	0.60	0.41	0.51	0.58	0.74
6"	A	14	17.50	22	24	27.75
	B	11	12.50	14	15	15.50
	Weight	114	177	300	780	780
	Cv	685	685	584	512	512
	CP	0.40	0.40	0.73	0.83	0.83
8"	A	19.50	21	26	29	32.75
	B	13.50	15	16.50	18.50	19
	Weight	207	285	481	1250	1270
	Cv	1050	1050	985	777	777
	CP	0.58	0.60	0.67	0.54	0.83
10"	A	24.50	24.50	31	33	39
	B	16	17.50	20	21.50	24.31
	Weight	317	456	981	1650	1890
	Cv	1650	1650	1650	1449	1240
	CP	0.52	0.52	0.47	0.58	0.53

Class	150 RF	300 RF	600 RF	900 RF	1500 RF	
12	A	27.50	28	33		
	B	19	20.50	22		
	Weight	457	696	1320		
	Cv	2400	2400	2400		
	CP	0.53	0.53	0.50		
14	A	31	33			
	B	21	23			
	Weight	642	725			
	Cv	3600	3600			
	CP	0.28	0.28			
16	A	34	34			
	B	23.50	25.50			
	Weight	830	1440			
	Cv	5200	5200			
	CP	0.51	0.51			
18	A	38.50	38.50			
	B	25	28.00			
	Weight	1225	1900			
	Cv	6250	6250			
	CP	0.50	0.50			
20	A	38.50	40			
	B	27.50	30.50			
	Weight	1500	2375			
	Cv	7850	7850			
	CP	.50	0.50			
24	A	51				
	B	32				
	Weight	1851				
	Cv	11300				
	CP	0.42				

- Notes:**
1. Inconel® X-750 spring is available.
  2. Contact DFT for stainless steel or other bolting materials.
  3. 316 graphite material.
  4. Consult DFT for availability

All dimensions are in inches. Weights are in pounds. CP: Cracking Pressure (psig)



Optional butt weld end